

“One team  
to serve your  
needs,”

# Blueprint for the gradual lifting of the Covid-19 measures



## “Blueprint for the gradual lifting of the Covid-19 measures”

---

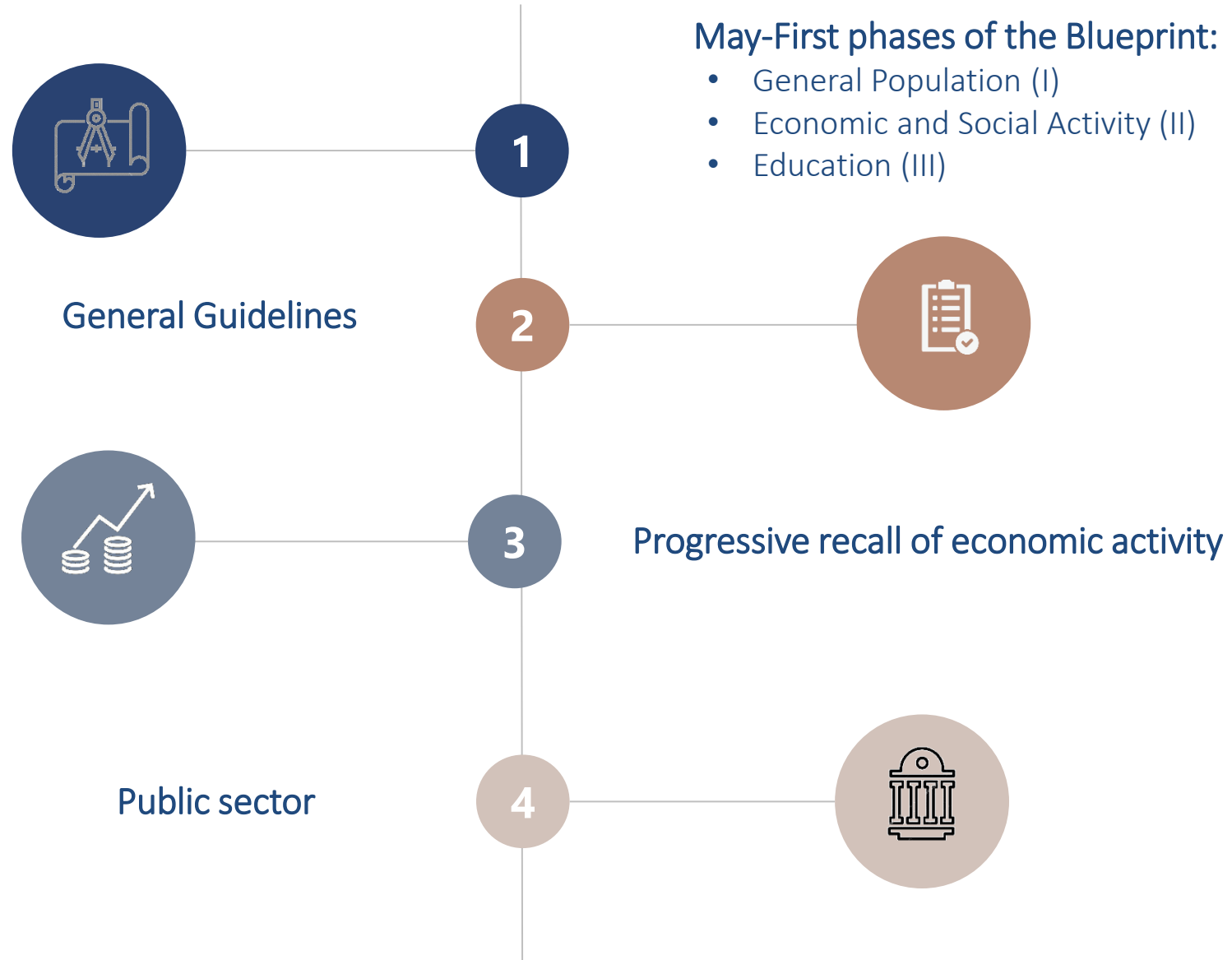
On April 28<sup>th</sup> , 2020, the Greek government unveiled a detailed blueprint (plan) for the progressive lifting of the Covid-19 restrictive measures.

*The basic pillars of the blueprint are.....*

# Pillars

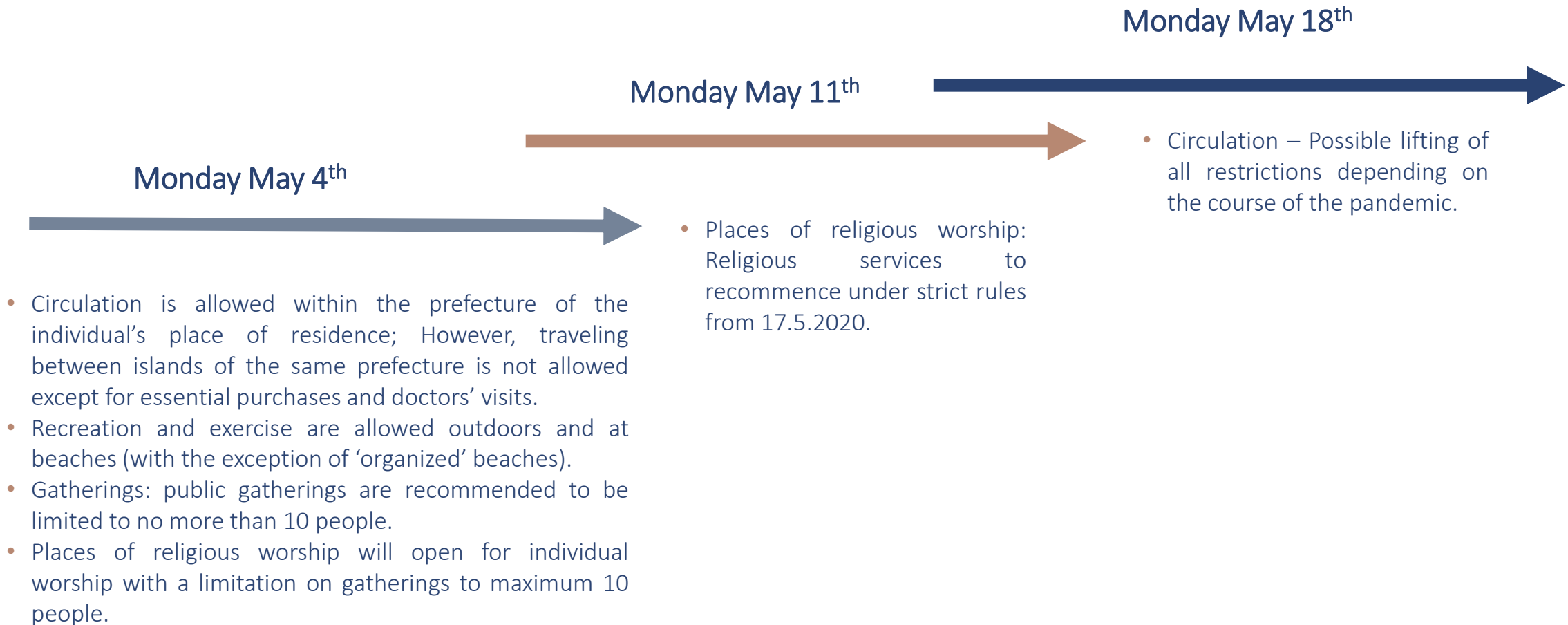
- 01 Restrictions including circulation permits remain fully in force until May 3th, 2020 (i.e. use of document permits and text sms messages).
- 02 The lifting of the lockdown will gradually develop in seven (7) phases.
- 03 First, second and third phase of the blueprint will develop gradually on May 4<sup>th</sup> , 11<sup>th</sup> and 18<sup>th</sup>, 2020 respectively.
- 04 Continuous monitoring of the impact of lifting the restrictive measures.
- 05 Roadmap for June will be announced on May 18<sup>th</sup>, 2020, after thorough assessment of the impact of lifting the measures.
- 06 Supervision of health and safety guidelines' implementation.
- 07 Continuation and strengthening of collective effort and individual responsibility.
- 08 Transparency of information

# At a glance.....



# May - First phases of the Blueprint

## General Population (I)



# May - First phases of the Blueprint

## Economic and Social Activity(II)



# May - First phases of the Blueprint

## Education (III)

Monday May 11<sup>th</sup>

- Students of the 3rd Lyceum grade will return to classes.
- Tutorial schools (frontistiria) for 3rd. Lyceum classes will recommence also on that day.

Monday May 18<sup>th</sup>

- Main body of remaining Lyceum and High School classes will open on May 18<sup>th</sup>, 2020 (Lyceum 1st and 2nd grade, High School 1st, 2nd and 3rd grade).
- Tutorial schools for secondary education and foreign language schools will reopen (wherever possible e-learning is strongly recommended).

# May - First phases of the Blueprint

Students in class should be sitting at least 1.5m apart.

No class should have more than 15 students.

Classes split in half. Half the class to go in Monday, Wednesday and Friday. Other half Tuesday and Thursday. Then they change over for the next week.

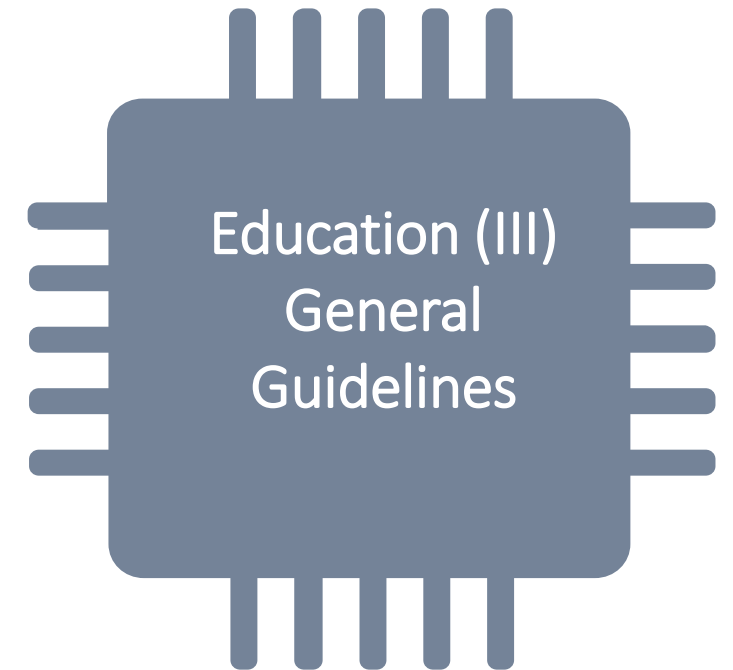
The half class staying at home will get supplied the work online.

The wearing of masks is optional in class.

There will be no end of year examinations for any year groups –  
Emphasis on covering the curriculum.

No absences for vulnerable students.

Provisions for vulnerable staff.





# General Guidelines



## Security

### Use of face mask

- Mandatory use of face mask and abiding by social distancing rules for employees and customers in hairdressers, barbershops, beauty parlors, book and stationery stores, sporting goods stores, consumer goods and electrical appliance stores, plant shops and florists, optical stores etc. and in the provision of any other services that involve close contact; same obligation for employees working in super markets and grocery stores.
- Strict recommendation for use of face mask in enclosed spaces by customers and employees and in public transportation (MMM).
- Strong recommendation for elderly people to avoid unnecessary movement.



## Road Traffic

### Circulation

- Lifting of city center vehicle restrictions in Athens (daktylios) for the month of May and free parking in the metropolitan areas. Recommendation to use vehicles in order to decongest public transportation during the first two critical months of lifting of measures.



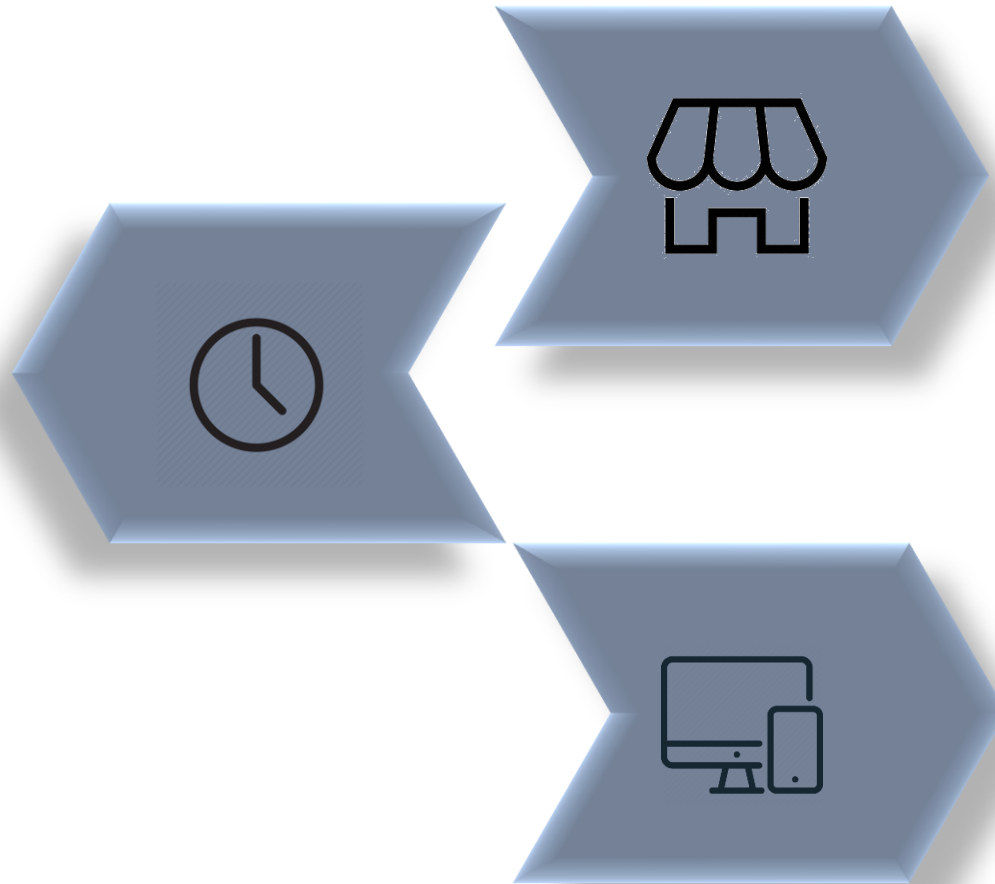
## Work

### Special Matters

- Possibility to suspend work for parents with minor children up to 15 years of age.
- Businesses that will reopen to bring back at least 50% of their workforce.

# Progressive recall of economic activity

Staggering of working hours: (i) Opening hours of commercial outlets moved to 10.00 am (ii) During peak hours (from 07.00' till 09.30 and from 14.30' to 17.30') the use of public transportation is recommended only by employees going to work (iii) Private sector employees (except those working in banks, super markets and bakeries) should arrive at their place of work in two waves from 09.00'am to 10.00'am.



Reopening of all retail outlets and of other activities will be done under specific protection rules and with strict monitoring. Failure to use a face mask, where mandatory, will incur a fine of 150 euros.

Where possible, teleworking should be adopted, entirely or up to 70%, in order to significantly reduce overcrowding in the workplace and to avoid unnecessary movement.

# Public Sector

Staggering of employee arrival times in the public administration. Arrival times should be split in zones (from 07.00' am to 09.00' am).



What applies to the private sector should also apply by analogy to the public sector. Teleworking will continue where applicable within the public sector with the exception of Security Forces, Armed Forces and the National Health System.



e-Government services to citizens and businesses (via 'e-gov'), to be further enhanced under the digital governance agenda.

K | G

Law Firm

THANK YOU

<http://www.kglawfirm.gr/>

